



PORSCHE



Tequipment Boxster

Accessories for the Boxster model range

To dream, you don't need to close your eyes.

Thinking laterally and breaking boundaries. Never standing still and never making do. Continually striving to improve every last detail and always highly motivated. These are characteristics that distinguish not only you, but also the Porsche development team in Weissach. Whether it's the designer or the engineer, each member of the team is committed to getting the best out of absolutely everything.

The same philosophy applies to the model-specific products available from Porsche Tequipment. With the Porsche Tequipment program, you can refine your car to your unique taste after you have taken delivery. All Porsche Tequipment products are designed with the complete vehicle in mind and by the same Porsche engineers and designers who also develop the vehicles themselves.



As with the cars we create, all of our aftermarket accessories undergo rigorous testing during their development. From design through to approval, we thoroughly scrutinize important properties, from safety to performance, and from design to durability.

Highlighted in our range: The 20-inch SportTechno wheels painted in GT Silver Metallic are an example of that thinking. The sizes of the wheels and tires have been maximized so that they finish flush with the body of the car and give it an even more imposing appearance. As a mark of refinement, the spokes and rim have a highly polished surface finish. The wheel centers with full-

color Porsche Crest are available with a GT Silver Metallic paint finish.

Whether you wish to enhance its performance, refine its style, or add comfort features, it is never too late to give your Porsche an extra personal touch.

For peace of mind, you can rest assured that your original warranty will not be affected.

For more information about Porsche Tequipment, please contact your Authorized Porsche dealer or visit porscheusa.com.



Exterior	5
Express your sporty inner attitude and accentuate the toned physique of your Boxster with wheels and Sport tailpipes from Porsche Tequipment.	
Interior	19
Inner values matter. Whether your emphasis is on performance, style, or classic appeal, we can turn your ideas into reality and your Boxster will always be 100 percent Porsche.	
Audio and communication	31
A Porsche without intelligent communication systems? Unimaginable.	
Car care	35
To keep your Porsche vehicle in top condition, we offer a range of car-care products to fit your needs.	
Panorama	41
A brief insight into the world of Porsche.	
Index	44



Contents



**The more you change it,
the more it becomes like you.**

A Porsche is often a decision for life. Two thirds of all Porsche cars ever built are still being driven today. That's not by chance—it's because they are cherished and well cared for by their drivers.

Even a relationship as solid as this one can welcome change once in a while. A few tasteful refinements can freshen your car's appearance and make it even more expressive.

The Porsche Tequipment range of accessories helps you to make your Boxster even more unmistakable and charismatic. Are you thinking about some new wheels, or do you like the look of the Sport tailpipes? Choose from a number of exterior enhancements that reaffirm the motorsport heritage of your Boxster.



Exterior





**You get more than accessories to your car's standard equipment.
You get more Porsche.**

[1] Model designation on doors in black

With light-colored exterior paint, a black model designation on the doors creates a striking contrast and heightens your sense of anticipation as you step inside.

Part no: 981 044 800 70 041

[2] Model designation on doors in silver

With dark exterior paint, a silver-colored model designation on the doors reinforces the unique character of your Boxster.

Part no: 981 044 800 70 V04



1



2

[3] Sport exhaust system* (not shown)

The Porsche sound is powerful, resonant, and throaty. Better still, it can be enhanced, with the sport exhaust system featuring a modified main silencer and a specially designed Sport tailpipe. The system is activated by a separate switch integrated into the front control panel.

Part no: 981 044 200 00

[4] Sport suspension (not shown)

Sometimes enhanced performance can be inspired by a closer relationship—with the road. The body of your Boxster will be 20 mm lower with the sport suspension.

Boxster
Manual: 981 044 400 00
PDK: 981 044 400 01

Boxster S
Manual: 981 044 400 02
PDK: 981 044 400 03
Not compatible with PASM.

[5] Sport tailpipes

Specially designed twin tailpipes in chrome-plated stainless steel. Gives a sportier look to the rear of your Boxster.

Part no: 981 044 200 10

*Some models may require additional components. (Please see fitting and conversion instructions.)



**Performance and everyday practicality.
What goes for your car goes for your wheels, too.**

Can you imagine your Boxster equipped with one of the wheel and tire sets from Porsche Tequipment? We can.

Offering even greater driving pleasure, they bring added individuality combined with a high level of agility and safety. Keeping your feet on the ground need never be boring.



**[1] 20-inch SportTechno wheels
with summer tires**

Set of one-piece alloy wheels optimized for low weight, thanks to flow-forming technology. The 20-inch SportTechno

wheels with the Tire Pressure Monitoring System (TPMS) are characterized by their imposing design and size. Clearly defined lines means that they are extremely easy to care for.

Part no: 981 044 602 10



**[1] 20-inch Carrera S wheels
with summer tires**

The design of the 20-inch Carrera S wheels is both dynamic and powerful—just like your Porsche.

incl. TPMS: 981 044 602 02

**[2] 20-inch Carrera S wheels
in Platinum (semi-gloss)
with summer tires**

Your Porsche vehicle delivers excellent dynamic performance, and so do these wheels. The 20-inch Carrera S wheels with summer tires and a paint finish in

Platinum (semi-gloss) emphasize the performance nature of your car and give it even more individuality. Includes wheel centers with full-color Porsche Crest.

incl. TPMS: 981 044 602 06



**[3] 20-inch Carrera Classic wheels
with summer tires**

Elegant, highly polished 10-spoke wheels with a two-tone finish. The intricate spokes provide a clear view of the Porsche brake system.

incl. TPMS: 981 044 602 08

**[4] 19-inch Boxster S wheels
with winter tires**

The dual five-spoke design of these wheels will accentuate the sporty appearance of your Boxster, while the winter tires offer improved traction in cold and wet conditions.



incl. TPMS: 981 044 600 04


**[5] 18-inch Boxster wheels
with winter tires**

These one-piece alloy wheels are not only the ideal match for your Porsche—they provide excellent cold-weather traction in conjunction with the winter tires.

incl. TPMS: 981 044 600 02



	Product	Boxster	Boxster S	Wheel dimensions (offset (ET) in mm)	Tire specifications
	<p>20-inch SportTechno wheels with summer tires^{1,3} (incl. TPMS)</p> <p>Part no: 981 044 602 10</p>	○	○	<p>Front: 8.5J x 20 ET 57 Rear: 10J x 20 ET 50</p>	<p>Front: 235/35 ZR 20 (88Y) Rear: 265/35 ZR 20 (95Y)</p>
	<p>20-inch Carrera S wheels with summer tires^{1,3} (incl. TPMS)</p> <p>Part no: 981 044 602 02</p>	○	○	<p>Front: 8J x 20 ET 57 Rear: 9.5J x 20 ET 45</p>	<p>Front: 235/35 ZR 20 (88Y) Rear: 265/35 ZR 20 (95Y)</p>



	Product	Boxster	Boxster S	Wheel dimensions (offset (ET) in mm)	Tire specifications
	<p>20-inch Carrera S wheels in Platinum with summer tires^{1,3} (incl. TPMS)</p> <p>Part no: 981 044 602 06</p>	○	○	<p>Front: 8J x 20 ET 57 Rear: 9.5J x 20 ET 45</p>	<p>Front: 235/35 ZR 20 (88Y) Rear: 265/35 ZR 20 (95Y)</p>
	<p>20-inch Carrera Classic wheels with summer tires^{1,3} (incl. TPMS)</p> <p>Part no: 981 044 602 08</p>	○	○	<p>Front: 8J x 20 ET 57 Rear: 9.5J x 20 ET 45</p>	<p>Front: 235/35 ZR 20 (88Y) Rear: 265/35 ZR 20 (95Y)</p>

Note on the use of winter tires:

Summer tires provide optimal performance at ambient temperatures above 44°F. Below this point, the tire compound begins to harden, and braking

distances are increased. We therefore recommend that you fit winter tires during the colder months of the year. Only then can you enjoy the highest standards of active safety from your

Boxster sports car. All winter tires approved by Porsche are identified by an “N” designation on the sidewall.

	Product	Boxster	Boxster S	Wheel dimensions (offset (ET) in mm)	Tire specifications
	<p>19-inch Boxster S wheels with winter tires^{1, 2, 3, 5} (incl. TPMS)</p> <p>Part no: 981 044 600 04</p>	○	○	<p>Front: 8J x 19 ET 57 Rear: 9.5J x 19 ET 45</p>	<p>Front: 235/40 R 19 92V M+S Rear: 265/40 R 19 98V M+S</p>
	<p>18-inch Boxster wheels with winter tires^{1, 2, 4, 6} (incl. TPMS)</p> <p>Part no: 981 044 600 02</p>	○	○	<p>Front: 8J x 18 ET 57 Rear: 9J x 18 ET 47</p>	<p>Front: 235/45 R 18 94V M+S Rear: 265/45 R 18 101V M+S</p>

[1] Snow chains

Specially designed for Porsche models with 18-inch tires, and featuring ultra-fine links for minimal adhesion of ice and snow. Set of two for rear axle.

Part no: 981 044 600 00

Not compatible with wheel spacers.

○ Compatible.

– Not compatible.

¹If your vehicle documents do not contain details of the correct wheel and tire combination, please request a technical approval certificate from your Authorized Porsche dealer. All tires are designed exclusively for Porsche as indicated by the special Porsche designation (N0, N1, etc.) on the sidewall. Tires that do not carry this designation are not recommended for use on your Porsche.

²Winter tires up to max. 149 mph.

³Not compatible with 5mm wheel spacers.

⁴Compatible with snow chains if no spacers fitted.

⁵Not compatible with snow chains—for winter tires only.

⁶Optional: use of 5mm spacers on front and rear axles to widen track.



[1] Wheel centers

Set of four wheel center caps with full-color Porsche Crest. The perfect finishing touch for any Boxster wheels.

18-inch Boxster wheel:	991 044 600 09
20-inch Carrera Classic wheel:	991 044 600 19
20-inch Carrera S wheel:	970 044 600 14
20-inch SportTechno wheel:	970 044 600 20
20-inch Carrera S Black (high-gloss) wheel:	997 044 600 47
20-inch Carrera S Platinum wheel:	991 044 600 21



1

[2] Anti-theft wheel protection

Set of four steel bolts with highly secure locking system (Thatcham).

w/out spacers:	991 361 057 00
w/ spacers:	991 361 980 00



2

[3] Wheel bolts in black including anti-theft protection

Set of 20 wheel bolts in black, four of which are anti-theft wheel bolts. Two versions available: for vehicles with and vehicles without 5mm spacers.

44 mm:	000 044 602 30
49 mm (5mm spacers):	000 044 602 31



3

[4] Crested valve caps

Silver-colored valve caps with embossed Porsche Crest.

Part no: 000 044 602 15

[5] Wheel spacers

Wheel spacers create a wider track for enhanced stability and presence on the road. When fitted, your Boxster will look even sportier, as the wheels run virtually flush with the body of the car. Package

comprises a set of four spacers (5 mm) including extended standard and anti-theft wheel bolts in black with highly secure Thatcham-approved locking system.

Part no: 991 044 500 00

Only in conjunction with 18-inch wheel sets.



4



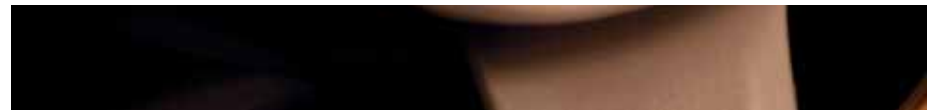
5

**Something deep inside convinced you
that this car was for you.**

Tradition and innovation, performance and practicality, style and functionality: The Boxster manages to reconcile all of these seemingly contradictory notions. It is a Porsche, after all. We don't focus solely on the exterior when we design our sports cars, so why should you.



Interior





You have highly developed senses for a reason.

[1] Leather

Leather is a traditional natural material—a true classic. Items made of Leather are both timeless and durable.

[2] Mahogany¹

Mahogany is a dark, fine Wood. Its fine grain gives it a very modern and elegant look.

¹Since Wood is a natural product, there may be variations in form and grain.



[3] Carbon

Carbon is a light but highly durable material which has its origins in motorsport. Its look is the ideal complement to the car's race-bred engineering.

[4] Brushed Aluminum

Brushed Aluminum creates striking accents and gives the interior a sporty, minimalist appearance.

[5] Alcantara®

This high-quality material is easy to care for, washable, and has excellent non-slip properties.



[1] Mahogany interior package

This package comprises inlays in Mahogany on the gear lever or PDK¹ gear selector and decorative strips in Mahogany on the dashboard.

Manual: 981 044 800 55+cc
PDK: 991 044 800 53+cc
¹7-speed Porsche Doppelkupplung (PDK).

[2] Heated multifunction steering wheel in Mahogany

The grain on the Mahogany multifunction steering wheel is as unique as a fingerprint. Thanks to the integrated buttons, you have control over a number of audio and, where applicable, navigation and telephone functions at your fingertips.

Manual: 991 044 400 05+cc
PDK: 991 044 400 03+cc
PDK w/ Sport Chrono: 991 044 400 04+cc

[3] Center console trim in Mahogany

Give your Boxster an added personal touch with the center console trim in Mahogany. Charismatic and unique, just like you.

Part no: 991 553 981 03 S65

*+cc: color code. See your Authorized Porsche dealer for more color options.



1, 2



3

[4] Carbon interior package

This package comprises inlays in Carbon on the gear lever or PDK¹ gear selector and decorative strips in Carbon on the dashboard.

Manual: 981 044 800 51+cc

PDK: 991 044 800 49+cc

¹7-speed Porsche Doppelkupplung (PDK).

[5] Heated multifunction steering wheel in Carbon

The multifunction steering wheel in Carbon brings you closer to the racetrack.

Thanks to the integrated buttons, you have control over a number of audio and, where applicable, navigation and telephone functions at your fingertips.

Manual: 991 044 400 08+cc

PDK: 991 044 400 06+cc

PDK w/ Sport Chrono: 991 044 400 07+cc

[6] Center console trim in Carbon

This trim is more than just a sporty detail—it adds a touch of motorsport.

Part no: 991 553 981 02 BX3



[1] Brushed Aluminum interior package

This package comprises inlays in Brushed Aluminum on the gear lever or PDK¹ gear selector and decorative strips in Brushed Aluminum on the dashboard.

Manual: 981 044 800 47+cc

PDK: 991 044 800 45+cc

¹7-speed Porsche Doppelkupplung (PDK).

[2] Center console trim in Brushed Aluminum

Every detail should be exactly as you imagined. This trim in Brushed Aluminum enhances the sporty feel of the interior.

Part no: 991 553 981 04 U03

+cc: color code. See your Authorized Porsche dealer for more color options.



[3] PDK gear selector in Aluminum

Specially designed PDK gear selector in Aluminum. The PDK gear selector inlays feature Leather trim in the interior color.

Part no: 9G1 426 980 01+cc

[4] PDK gear selector in Alcantara®, gear lever in Alcantara® (not shown)

This gear lever/PDK gear selector highlights the close association of Porsche with motorsport. Finished in black Alcantara®.

Part no: 970 426 990 01



**More than an accessory.
A little piece of Weissach.**

+cc: color code. See your Authorized Porsche dealer for more color options.



[1] SportDesign steering wheel

This steering wheel in Leather adds a distinctly sporty accent and is yours to personalize, thanks to our selection of Leather colors. Two versions are available: one for the manual gearbox and one for PDK. The PDK version is equipped with gearshift paddles. The right-hand paddle shifts up; the left-hand paddle shifts down.

Manual: 991 044 400 02+cc
PDK: 991 044 400 00+cc
PDK w/ Sport Chrono: 991 044 400 01+cc



[2] Storage compartment lid with Porsche Crest

The lid of the center console storage compartment is finished in Leather to match the interior trim and embossed with the Porsche Crest.

Part no: 991 553 982 01+cc

[3] Floor mats with Leather edging

Made-to-measure floor mats with Leather edging and Porsche logo, which have a waterproof underside and are non-slip. They are secured by a special fastener system.

Part no: 981 551 613 00+cc

[4] Rubber floor mats

Two attractive tailored floor mats. Non-slip and waterproof.

Part no: 981 044 800 41

[5] Key pouch in Leather (not shown)

In Smooth-Finish Leather with decorative stitching and embossed Porsche Crest. Includes the tether for the vehicle key.

Part no: 970 044 000 49+cc



3



4

Door-entry guards

A real eye-catcher. Whether you choose door-entry guards in Carbon or Stainless Steel, they provide a stylish and dramatic finishing touch. If you select illuminated door-entry guards, the white illuminated model logo is a further highlight.

[1] Door-entry guards in Carbon

A striking performance look, Carbon is an extremely lightweight high-tech material. With model logo.

Boxster: 981 044 800 20

Boxster S: 981 044 800 21

[2] Door-entry guards in Carbon, illuminated

Door-entry guards in Carbon with white illuminated model logo place equal emphasis on performance and extravagance.

Boxster: 981 044 800 30

Boxster S: 981 044 800 31

[3] Door-entry guards in Stainless Steel

The clean, sophisticated look of Stainless Steel is accented with the model logo.

Boxster: 981 044 800 00

Boxster S: 981 044 800 01



1



2

**[4] Door-entry guards in
Stainless Steel, illuminated**

These door-entry guards with white illuminated model logo add a touch of elegance.

Boxster: 981 044 800 10

Boxster S: 981 044 800 11

[5] Pedals and footrest in Aluminum

At your feet and under your control: the pedals with footrest all made from lightweight and durable yet visually appealing solid Aluminum.

Manual: 990 044 700 02

PDK: 991 044 700 00



3



4



5

Passion for the sports car.

Communication technologies included.

The Boxster symbolizes independence and freedom. It embodies tradition and innovation, combines style and functionality, and unifies performance with everyday practicality. It's what you expect from any Porsche, and that's why it inspires pure passion for the sports car.

You feel it in the interior, too. From the very first second. Everything is where you would expect it to be. That includes intelligent communication technologies, which are designed to guide this superb athlete to its destination as safely and as directly as possible. Top up or top down, a sporty drive is assured.



Audio and communication



[1] PCM with navigation module and CD/DVD changer

The central information and communication system with a high-resolution seven-inch color touchscreen is easy to operate.

The radio is equipped with an RDS twin tuner. The six-disc CD/DVD changer plays CDs and audio DVDs and is MP3-compatible. Audio playback of video DVDs is also supported. The GPS navigation

module has a hard drive containing map data. Other features include dynamic route calculation, a 3-D map display, and automatic route recording.

Part no: 991 044 900 90–96
Only for vehicles with Sound Package Plus or Bose® Surround Sound System.

[2] Electronic logbook¹

The optional electronic logbook enables the automatic recording of mileage, route distance, date and time, starting point, and destination as part of every journey. Once you have downloaded the logbooks from PCM via

Bluetooth® or the USB interface, the data can be evaluated on your home PC using the software supplied.

Part no: 958 044 900 29

¹Only in conjunction with PCM with navigation module.



[3] Telephone module¹

The optional quadband GSM telephone module offers convenience and excellent reception. By inserting a SIM card directly into the integral SIM card reader of the PCM, calls can be made using the hands-free feature. Alternatively,

the Bluetooth® capability of a mobile phone can be used to make calls through the SIM Access Profile (SAP)².

Part no: 991 044 900 31

[4] Voice-control system¹ (not shown)

Almost all of the PCM functions can be activated by voice control. The system recognizes commands and gives audible feedback, guiding you through the functions. Without needing to train the system, phonebook entries can be retrieved, a radio station selected, or the navigation destination entered directly by speaking whole words rather than dictating just one letter at a time.

Part no: 991 044 900 36

¹Only in conjunction with PCM with navigation module.

²For information on compatible mobile phones, visit porscheusa.com.



2



3

You didn't entertain the idea of compromise when you chose your car.

So why start now?

After an exciting drive, your Porsche deserves a rest and some care and attention. Porsche Tequipment has everything you need to tend to your Boxster.



Car care





**You should never have to do without.
Neither should your Porsche.**

There are many things that are difficult to live without. Your Boxster is one, and so are the accessories and car-care products from Porsche Tequipment. All 100 percent Porsche for extra peace of mind.

[1] Indoor car cover

Tailored indoor cover made from breathable, antistatic, and dirt-resistant fabric. With full-color Porsche Crest and logo.

Part no: 981 044 000 00



[2] Outdoor car cover

Tailored outdoor cover in silver-colored fabric with Porsche Crest and logo. Water-repellent, it provides excellent protection against a range of weather conditions including strong sunlight. With anti-theft protection.

Part no: 981 044 000 01



2

[3] Cargo liners front and rear (rear not shown)

These made-to-measure waterproof and washable plastic containers are ideal for carrying a variety of items, such as shopping or sports equipment, inside the vehicle.

Both cargo liners carry a Porsche logo and the rear liner features the Boxster silhouette.

Front: 991 044 000 10



3

[1] Car-care case Cabriolet

Aluminum case containing high-quality car-care products specially approved for your Porsche. Includes shampoo, wax, glass cleaner, Leather cleaner and conditioner, convertible top conditioner, and a selection of other accessories. All products are available separately.

Part no: 000 044 000 94

[2] Ice scraper

Practical accessory featuring an Aluminum telescopic handle, enabling easy removal of ice and snow from your Porsche. Integral rubber lip for removing water.

Part no: 955 044 000 02

[3] Microfiber cleaning cloths

Pack of three microfiber cloths, allowing the PCM touchscreen and other delicate interior surfaces to be cleaned safely and efficiently.

Part no: 000 044 000 95



1



2



3

[4] Wheel-cleaning kit

Cleaning fluid and brush set for alloy wheels. Cleaning fluid also available separately as a refill.

Part no: 000 044 001 86

[5] Refill bottle

Refill bottle and wheel cleaner for the wheel-cleaning kit.

500 ml w/ spray nozzle: 999 901 070 01

1,000 ml w/ spray nozzle: 999 901 070 00

[6] Porsche Charge-o-Mat II

(Not shown) Battery charger with charge maintenance and monitoring function. An adapter is available for vehicles without a cigarette lighter.

Part no: 955 044 900 54



5



4

Panorama



Porsche European Delivery

Imagine touring the original factory and then being handed the keys for an even more gratifying opportunity: touring Europe in your brand-new Porsche vehicle. What happens next is up to you. Contact your local Authorized Porsche dealer for more information.

Porsche Approved Certified Pre-Owned

Only the best Porsche cars earn the right to be called "Certified." A meticulous 111-point inspection, a 2-year or 50,000-mile Limited Warranty, and 24-Hour Roadside Assistance make this program one of a kind. Contact your Authorized Porsche dealer for details.



Porsche Exclusive

Realize your vision of the perfect Porsche with our factory customization program. From styling enhancements to performance upgrades, all modifications are uniquely handcrafted for your Porsche.

Porsche Classic

Your specialist source for genuine Porsche parts and technical documentation, as well as servicing, repair, and restoration for all types of classic Porsche vehicles. For more information, visit porscheusa.com/classic.



Porsche Tequipment Online

You've already taken delivery of your Porsche. Are you now thinking of giving it a personal touch? Our Tequipment range of accessories is also available online at porscheusa.com.

Christophorus

Our bi-monthly magazine for Porsche owners is packed with news, articles, and exclusive interviews covering every aspect of Porsche automobiles and the Porsche lifestyle.





Porsche Roadside Assistance

Your ownership experience is enhanced with complimentary enrollment in the Porsche 24-Hour Roadside Assistance program. It includes coverage 24 hours a day, 365 days a year, for the duration of your warranty. Contact your Authorized Porsche dealer for specifics.



Porsche Financial Services

Competitive, convenient, and carefully crafted financing options can be customized to meet your needs. Ask your certified Porsche Sales Consultant for details.





Driver's Selection by Porsche Design

Our distinctive collection of clothing and accessories combines timeless elegance with unmistakable quality. Visit your Authorized Porsche dealer or shop online at porscheusa.com/shop.



Porsche Online

For all the latest news and information from Porsche, go to porscheusa.com.

Follow us on:  

Porsche Driving Experience

1. Porsche Travel Club

Exclusive driving holidays and incentive ideas combining luxury and adventure, worldwide. To find out more, contact us by e-mail at travel.club@porsche.us.



2. Porsche Sport Driving School

Develop your skill and explore your Porsche with the Porsche Sport Driving School. Learn firsthand from famed Porsche Racing drivers while they teach you at a world-class racing facility. Visit porschedriving.com for more information.



Porsche Clubs

With more than 120,000 members worldwide in 60 countries, know you are not alone in your passion for Porsche. Learn more about the brand and meet other Porsche enthusiasts just like yourself. Visit porscheusa.com for more information.



Porsche Museum

More than 80 vehicles are waiting to take you back through every stage of Porsche history. They include such icons as the 356, 911, and 917, and many other special exhibits presented in an atmosphere you can't experience anywhere else.





Exterior	Page	Interior	Page	Audio and communication	Page	Car care	Page
<input type="checkbox"/> Model designation on doors	7	<input type="checkbox"/> Mahogany interior package	23	<input type="checkbox"/> PCM with navigation module and CD/DVD changer	33	<input type="checkbox"/> Indoor car cover	37
<input type="checkbox"/> Sport exhaust system	8	<input type="checkbox"/> Heated multifunction steering wheel in Mahogany	23	<input type="checkbox"/> Electronic logbook	33	<input type="checkbox"/> Outdoor car cover	38
<input type="checkbox"/> Sport suspension	8	<input type="checkbox"/> Center console trim in Mahogany	23	<input type="checkbox"/> Telephone module	34	<input type="checkbox"/> Cargo liners front/rear	38
<input type="checkbox"/> Sport tailpipes	8	<input type="checkbox"/> Carbon interior package	24	<input type="checkbox"/> Voice-control system	34	<input type="checkbox"/> Car-care case Cabriolet	39
<input type="checkbox"/> 20-inch SportTechno wheels with summer tires	10	<input type="checkbox"/> Heated multifunction steering wheel in Carbon	24			<input type="checkbox"/> Ice scraper	39
<input type="checkbox"/> 20-inch Carrera S wheels with summer tires	11	<input type="checkbox"/> Center console trim in Carbon	24			<input type="checkbox"/> Microfiber cleaning cloths	39
<input type="checkbox"/> 20-inch Carrera S wheels in Platinum (semi-gloss) with summer tires	11	<input type="checkbox"/> Brushed Aluminum interior package	25			<input type="checkbox"/> Wheel-cleaning kit	40
<input type="checkbox"/> 20-inch Carrera Classic wheels with summer tires	11	<input type="checkbox"/> Center console trim in Brushed Aluminum	25			<input type="checkbox"/> Refill bottle	40
<input type="checkbox"/> 19-inch Boxster S wheels with winter tires	12	<input type="checkbox"/> PDK gear selector in Aluminum	26			<input type="checkbox"/> Porsche Charge-o-Mat II	40
<input type="checkbox"/> 18-inch Boxster wheels with winter tires	12	<input type="checkbox"/> PDK gear selector/gear lever in Alcantara®	26				
<input type="checkbox"/> Snow chains	16	<input type="checkbox"/> SportDesign steering wheel	27				
<input type="checkbox"/> Wheel centers	17	<input type="checkbox"/> Storage compartment lid with Porsche Crest	28				
<input type="checkbox"/> Anti-theft wheel protection	17	<input type="checkbox"/> Floor mats with Leather edging	28				
<input type="checkbox"/> Crested valve caps	17	<input type="checkbox"/> Rubber floor mats	28				
<input type="checkbox"/> Wheel spacers	18	<input type="checkbox"/> Key pouch in Leather	28				
<input type="checkbox"/> Wheel bolts in black including anti-theft protection	18	<input type="checkbox"/> Door-entry guards	29–30				
<input type="checkbox"/> Materials	21	<input type="checkbox"/> Pedals and footrest in Aluminum	30				



Porsche Cars North America, Inc.
980 Hammond Drive, Suite 1000
Atlanta, Georgia 30328

Dr. Ing. h.c. F. Porsche AG is the owner of numerous trademarks, both registered and unregistered, including without limitation the Porsche Crest®, Porsche®, Boxster®, Carrera®, Cayenne®, Cayman®, Panamera®, Speedster®, Spyder®, Tiptronic®, VarioCam®, PCM®, PDK®, 911®, 4S®, 918 Spyder®, FOUR, UNCOMPROMISED.®, and other model names and numbers, and the distinctive shapes of the Porsche automobiles, such as the federally registered 911 and Boxster automobiles. The third party trademarks contained herein are the properties of their respective owners. Porsche Cars North America, Inc., believes the specifications to be correct at the time of printing. Specifications, performance standards, standard equipment, options, and other elements shown are subject to change without notice. Some options may be unavailable when a car is built. Some vehicles may be shown with non-U.S. equipment. Please ask your dealer for advice concerning the current availability of options and verify the optional equipment that you ordered. Porsche recommends seat-belt usage and observance of traffic laws at all times.

All fuel consumption and emissions data contained herein are derived from U.S. tests and were accurate at time of press.

©2012 Porsche Cars North America, Inc.

Printed in the U.S.A.

MKT 001 014 12

porscheusa.com

1-800-PORSCHE



MIX
Paper from
responsible sources
FSC® C102835